

how to
save
water
for life

Water Report Card

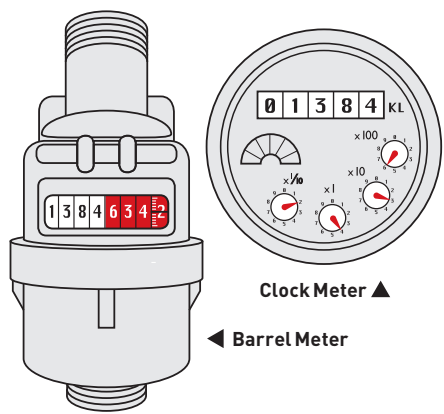
Do you know how much water you really use?

Read your water meter now, and again at the same time of day exactly one week from now to calculate your average daily water usage. Then visit actew.com.au to see how it compares against the daily targets for this time of year and for some tips on how to use less.

How to read your meter.

There are two types of water meter commonly found in the ACT. To take a reading from a barrel meter, simply write down the numbers in the white and red sections. The final number shows tenths of a litre. If you have a clock meter, write down the number of kilolitres shown (KL) followed by the readings for the x100, x10 and x1 dials.

Both the meters shown here read 1,384,634.2L



Clock Meter ▲
◀ Barrel Meter

_____ Date 1 _____ Time _____ Meter Reading 1 _____

_____ Date 2 (same time, one week later) _____ Meter Reading 2 _____

Weekly Total (Reading 2 - 1) _____

Daily Average (÷ 7) _____

Per Person _____

(divide by the number of people in the household)

